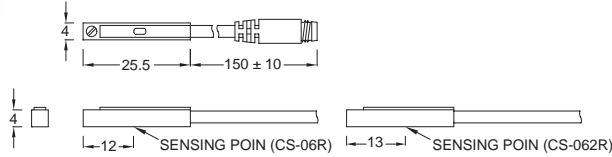


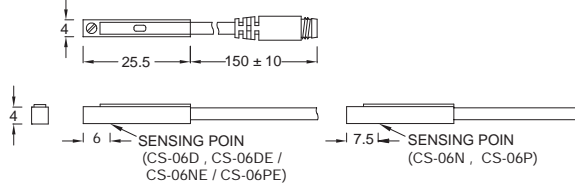


### ■ DIMENSIONS

CS-06R, CS-062R / CS-06R-QD, CS-062R-QD



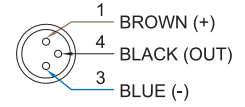
CS-06D, CS-06DE, CS-06N, CS-06NE, CS-06P, CS-06PE / CS-06D-QD, CS-06DE-QD, CS-06N-QD, CS-06NE-QD, CS-06P-QD, CS-06PE-QD



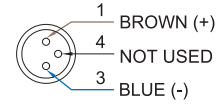
Unit:mm

### ■ QD PINOUT

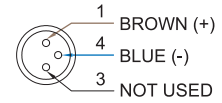
\*3 wire QD wiring



\*2 wire QD wiring



\*2 wire EQD wiring



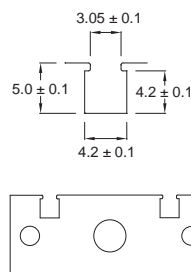
### ■ SPECIFICATIONS

TYPE	CS-06R	CS-062R	CS-06D	CS-06DE	CS-06N	CS-06NE	CS-06P	CS-06PE
CONNECT DIAGRAM								
CHARACTERISTICS								
Wiring Method	2-Wire Type				3-Wire Type			
Switching Logic	SPST, Normally Open				Solid State Output, Normally Open			
Sensor Type	Reed Switch		-		NPN Current Sinking		PNP Current Sourcing	
Operating Voltage	5~120V DC/AC	5~240V DC/AC	10~28V DC		5~30V DC			
Switching Current	100mA max.		4~40mA max.	50mA max.	200mA max.			
Contact Rating (*1)	10W max.		1.1W max.	1.5W max.	6W max.			
Current Consumption	-				8mA @ 24V DC max.	6mA @ 24V DC max.	8mA @ 24V DC max.	6mA @ 24V DC max.
Voltage Drop	3.5V max.			3.7V max.	1V @ 200mA max.	0.5V @ 200mA max.	1V @ 200mA max.	0.5V @ 200mA max.
Leakage Current	-		1mA max.	0.1mA(40uA) max.	0.01mA max.			
Indicator	Red LED	Green LED	Red LED				Green LED	
Cable	ø2.8, 2C, PUR				ø2.8, 3C, PUR			
Operating Frequency	200Hz		1000Hz max.					
Magnet Requirement (*2)	70Gauss		40Gauss	40~1000Gauss	40Gauss	40~1000Gauss	40Gauss	40~1000Gauss
Temperature Range	-10~70°C (+14~158°F)							
Shock (*3)	30G		50G					
Vibration (*4)	9G							
Enclosure Classification	IEC 60529 IP67 (NEMA 6)							
Protection Circuit (*5)	1		4	3,4	2,3,4	3,4	2,3,4	3,4

**NOTE:**

1. WARNING: Never exceed rating (Watt=Voltage x Amperage). Permanent damage to sensor will occur.
2. Measuring standard target: ø15.5Xø8X5t (Anisotropy rubber magnet)
3. Sin wave / X, Y, Z 3 directions / 3 times each direction / 11 ms each time.
4. Double amplitude 1.5 mm / 10Hz~55Hz~10Hz (Sweep 1 min) / X, Y, Z 3 directions / 1 hour each time.
5. 1=None / 2=Short-circuit / 3=Power Source Reverse polarity / 4=Surge Suppression

### ■ GROOVE DIMENSIONS



Unit:mm